



*highpad | Media Control
User Manual Vers. 1.0*

© 2005 by high-def | The High-Definition Marketing Company GmbH, All rights reserved. No part of this document may be copied, reproduced or translated in any way without prior written consent of high-def | The High-Definition Marketing Company GmbH. Every effort has been taken in manufacturing the product supplied and the accompanying documentation. high-def | The High-Definition Marketing Company GmbH assumes no liability for any damage caused by the use of its products, nor will it recognize warranty or update claims, unless explicitly provided for otherwise in a special agreement. The information contained in this manual is subject to change without notice.

highpad | Media Control

Enjoy your personal audio, visual and digital media anywhere, any place. highpad | Media Control is your wireless communicator between your Microsoft Windows XP Media Center 2005 or Windows Media Player. Connect, control and interact at home or while you're on the go with all your personal entertainment.

Now, you decide where and when to listen and watch your favourite digital media.

highpad | Media Control is designed to work with any Digital Mobile Device (DMD) running Windows Mobile for Pocket PC (PDA, MDA, XDA, VPA, ...). Wirelessly connect via Wi-Fi, Bluetooth, GPRS or UMTS to control your networked Microsoft Windows XP Media Center 2005 or Windows Media Player.

The intuitive Graphical User Interface (GUI) allows you to easily control and access your networked Media Center and content via touch-screen or soft keys. Wirelessly navigate through all your digital media. Instantly select the entertainment program of your choice from your media library.

Features:

- Intuitive, simple and easy to use interface with Touchscreen or Softkeys
- Remote Control Microsoft Windows XP Media Center 2005/Media Player functions
- Stream, download and synchronize your media library at home or on the move
- Manage playback and playlists
- Playback music, radio, video and pictures

plus a whole lot more...

*System Requirements for highpad:*Digital Mobile Device:

- Windows Mobile for Pocket PC 2002 or higher
- Windows Media Player 9 for Pocket PC or higher
- Microsoft .NET Compact Framework 1.0 or higher
- Active Sync
- TCP/IP Network Connection to your Media Center (with Cable, WiFi, Bluetooth, GPRS/UMTS)

Media Center:

- Microsoft Windows XP Media Center Edition 2005 or higher or Windows Media Player 9 or higher
- Windows Media 9 Series Encoder
- .NET Framework 1.0 or higher
- Active Sync
- TCP/IP Network Connection to your Digital Mobile Device (with Cable, WiFi, Bluetooth, GPRS/UMTS)

Installing/Uninstalling

Installing highpad | Media Control

Checklist: Make sure that you have installed ActiveSync on your Media Center and DMD. Check if you have installed the Windows Media Encoder 9 and Microsoft .NET Framework Version 1.0 or higher. (If you have already installed Windows Media Center Edition 2005 on your system, you automatically have .NET Framework Version 1.0 running). You must have Microsoft .NET Compact Framework 1.0 Version or higher on your DMD installed (DMD models with Windows Mobile 2003 for Pocket PC Version 2 have already Compact Framework installed). It may not hurt upgrading to the the latest version of .NET Compact Framework, though. At the time this manual is being written, this is Version 1.0 SP3. Now, create a connection between your Media Center and DMD (You will find further information in ActiveSync Help).

Double click on the “setup.exe” file and follow the on-screen installation.

Uninstalling highpad | Media Control

Make sure that you have installed ActiveSync on your Media Center and DMD. Verify that an ActiveSync connection is established between your Media Center and DMD (You will find further information in ActiveSync Help).

Double click on the “setup.exe” file and follow the uninstall on-screen instructions.

Alternatively, you can remove highpad | Media Control via the the Software Panel on the Media Center or from your DMD via System Settings – Remove Programs. You will find further information in Windows Help.

Getting started

1. Start the highpad | Media Control Server on your Media Center (Start->Programs->highpad Media Control->highpad Media Control Server)
2. Make sure that highpad | Server is running on your Media Center (The highpad | Server icon should be displayed in the Infobar)
3. Start the Windows Media Center 2005 Shell on your Media Center (This is only necessary if you have installed highpad for Windows Media Center. If you have installed highpad for Media Player you can go to the next step)
4. Create a network connection (Wi-Fi, Bluetooth, USB, Active Sync,...) between your DMD and your Media Center. You must set up a TCP/IP connection to run highpad | Media Control.
5. Start highpad | Media Control on your DMD (Start->Programs->highpad)
6. You will see the software activation screen on your DMD. Please write down your Hardware ID which is displayed there.
7. After buying highpad | Media Control, you will get an eMail from high-def with your personal login and password for www.highpad.com. Please open www.highpad.com in a Web Browser on your PC, log in and follow the instructions to generate your activation key.
8. Get back to the Pocket PC. Enter activation key, Name and serial number into the activation form. You can review this data any time by logging into www.highpad.com again.

9. Press "OK". In case an error message appears, please check if you entered everything correctly.
10. The highpad Start-Screen appears

Should you encounter any problems during the registration process, please write an eMail to register@high-def.de. Please tell us your Hardware ID and eMail address (the one you've used when buying highpad | Media Control) and we will send you the activation key via eMail.

highpad | Start-Screen



From the Start-Screen you can select the desired application. You can customize highpad for your individual needs. Applications greyed out are not available and can be purchased separately.

Remote Media

Remote Media allows you to download your media libraries onto your DMD to playback all digital media content stored on your Media Center.

Remote Streaming

Remote Streaming streams your music, video and pictures that are connected via home network directly onto your DMD for instant playback. With Remote Streaming you can enjoy and access your media anywhere, without downloading the content. All you need is a network connection.

Remote Exchange

Remote Exchange synchronises your digital media on your Media Center with that on your DMD. Wirelessly transmit your personal music, videos and photos from your Media Center to your DMD. Enjoy total freedom anywhere, anytime.

Remote MCE

Remote MCE turns your Pocket PC into a wireless touch-screen remote control to operate Microsoft Windows XP Media Center 2005 or Media Player functions and commands.

Remote PVR

With Remote PVR you always have access to your TV programme guide. Record and program your favourite shows irrespective of the time and day or location. Transmit the record command straight to your Media Center.

Media Player

Use the Windows Media Player to playback all your digital media on your DMD.

Operation



Switch between full-screen and window mode.





Close the application





Shows the connection status of the Media Center (when launching the Start-Screen, it is deactivated / grey).

highpad | Remote MediaNavigation

The application can be operated via soft-keys or touch-screen, depending on your Digital Mobile Device.


With  you always return one step back. With  you always jump to the Media Control – Main Menu.

“>” This indicates, that there are more menu levels available.


The green highlight-bar indicates your present position. With the shuttle wheel  you can navigate up and down. With the yellow  center button, positioned in the center of the shuttle wheel you move to next desired level.

Alternatively in navigating using the touch-screen, you can navigate with the soft-keys (Up, Down and Enter) on your Digital Mobile Device.

You can customize and personally define the soft-keys on you Digital Mobile Device. Select Settings > keys and define your preferred keys.

Via “More Programs” > highpad Media Control or with  you can return back to the Start-Screen.

Getting Connected

1. Go to Settings > connection settings and add a server.
2. Enter a preferred name for the connection in "Connection Name". Click inside the pop-up or activate the keyboard to start writing.
3. Enter the Server name or IP-Address (e.g. 192.168.2.10) of your Media Center PC. (You will find the Server name on your computer in: My Computer/Properties/Computer Name Tab. If you do not know the IP-address of your computer, open the DOS shell window (Start-> Run-> cmd. Type the command *ipconfig /all* to find out the IP-address.
4. Click with OK to add the server.
5. Return with "Back" or "Home" to the Main Menu. Select Settings > Active Connection.
6. Click onto the "server name" that will connect with Remote Media to your Media Center. The currently active connection has a check-mark placed left to it.
7. Return with the "Back" or "Home" button to the Main Menu. Create a connection to your Media Center by selecting Shut Down > in the Main Menu. Click Connect/Disconnect.
8. If Remote Media is connected with your Media Center, it will be displayed via the connection status  indicator in the top left corner. (Red means disconnected, green means connected, yellow means connection will be established or data is being transferred).

Control Functions:

(see also highpad | Start Screen)



Next Track (The function "Fast Forward" can be defined as a Soft-key under Settings>Keys.)



Previous Track (The function "Fast Reverse" can be defined as a Soft-key under Settings>Keys.)



Show the Playback Window



Start, Stop/Pause the playback

- While playing, the playback can be paused anytime
- Clicking on "Play/Pause" while no playback the current Now Playing Queue will be played
- Clicking on "Play/Pause" if you have selected in the menu an album, music track or video the actual playback will be paused, clicking again on "Play/Pause" the selected music track or video will be played. If there is no playback the selected music track or video will be played on first click



Shows the connection status. If you click on the button, the Shut Down menu appears.

highpad | Remote Streaming



Navigation

(see Remote Media)

The difference to highpad | Remote Media is, that the digital media will not be played back on your Media Center but on your DMD. The digital media is now streamed to your Digital Mobile Device and being played there. In this version of Remote Streaming, you can only stream single music tracks, single videos and single pictures. Streaming of music playlists and picture albums is currently not supported.

All audio and video media is played back with Windows Media Player. Pictures are displayed with the Microsoft Picture Viewer.

Remote Streaming works only, if you have the Windows Media Encoder 9 or higher on your Media Center and Windows Mobile 2003 or higher on your DMD installed.

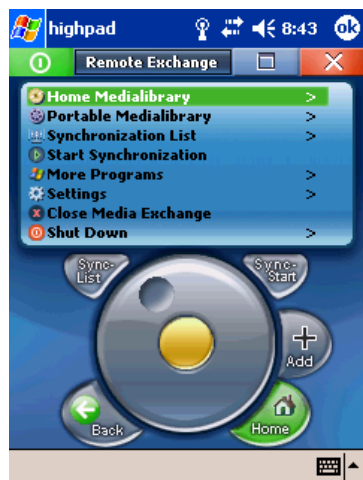
Control Functions



Start the Windows Media Player



Start streaming music, videos and pictures

highpad | Remote ExchangeNavigation

(see Remote Media)

The folders where highpad | Remote Exchange uses to copy files from your Media Center to your Digital Mobile Device can be selected in Settings>Media Folders.

Control Functions

Shows the list of files to be synchronized.



Starts to synchronize all selected media with your Media Center.



Adds the selected entry from of your library to the synchronization list.


highpad | Remote MCE



Navigation

You can operate Remote MCE via soft-keys or with a touch-screen.

The predefined soft-keys for Remote MCE can not be changed. The meaning of the buttons changes depending on the selected screens.

You can switch between keymappings by selecting “Default Keys” from your DMD and between the mapping set by highpad. Clicking on the Shut Down button  brings up a pull-down menu. You can select the Key Mappings you want, Connect/Disconnect to your Media Center or change the active connection to your Media Center.

The active connections shown in this pull-down menu are the same you have previously selected in the other highpad applications.

These buttons  allow you to switch between the screens.

Move the cursor on the Mouse Pad screen, by touching the touch-screen. The cursor will also move on display connected to your Media Center. Click left to activate the left mouse key, click right to activate the right mouse key.

highpad | Remote PVRNavigation

(see Remote Media)

Control functions

Shows the list of your recorded events. You can add or change the recording events. You can only add or program an event, if the entered television program channel name, matches with the one defined by the Microsoft Windows XP Media Center Edition 2005. Make sure to write down the station names in the Electronic Program Guide from the Microsoft Windows XP Media Center Edition 2005.



Transmits your recorded events to your Media Center.

Troubleshooting

highpad does not connect

- Check if a network connection was activated
- Check if you entered the correct "Servername/IP"
- Check if the Media Center, the highpad Server(the green dot in the system tray) and Microsoft Windows XP Media Center Edition 2005 (If you have installed highpad for MCE 2005) are launched and running
- Check if the IP address is the correct. Open the DOS shell window (Start-> Run-> cmd. Type in the command *ipconfig /all* to find out the IP-address
- Check if any firewall is enabled. highpad needs Ports 8919 and 8080 to be open.

Connecting to your Media Center takes to long and you want to abort

- Disconnect the TCP/IP connection by turning off the WLAN/Bluetooth or GPRS/UMTS connection
- Alternatively go to Start->Settings->System->Memory->Running Programs and stop all highpad Tasks

Start- or restarting Microsoft Windows XP Media Center Edition 2005 failed

- Check the Windows Task-Manager if a process "ehshell.exe" is running. If yes, you must end all "ehshell.exe" processes and restart Windows XP Media Center Edition 2005.

The "Pause" function does not work any more after playing back a music track or album

- Check if, the Microsoft Windows XP Media Center Edition 2005 has opened a message box, that needs to be answered with OK.
- Press OK to close the message box